

# Evaluation of societal impact in Norwegian SSH evaluations

---

Ms Anette Askedal & Dr Jon Holm

SSH impact conference

Vienna 29 November 2018

05.12.2018





## Great expectations

- **Carlos Moedas on Horizon Europe**
  - The next European science and research funding programme is designed to **connect people with the achievements financed by their tax money**, and to fix problems with innovation funding
- **RCN main strategy (2015-2020): *Research for innovation and sustainability***
  - increase investment in breakthrough research and innovation
  - **enhance research for sustainable solutions in society and the business sector;**
- **RCN strategy for the Humanities (2010)**
  - **increasing awareness of the relevance of the humanities to society**



The humanities are truly under siege,  
and nowhere more so than in Europe,  
their supposed original 'home.'

*The Humanities under Siege?*  
Theo D'haen, KU Leuven (Belgium)  
*Diogenes* 229-230 (58, 1-2) 2012

05.12.2018

3

Kolumnetittel





# Evaluation of academic fields every 10 years - organised by RCN

## SSH

- Historical Research (2008)
- Law (2009)
- Philosophy and History of Ideas (2010)
- Sociology (2010)
- Geography (2011)
- Anthropology (2011)
- Humanities (2017)
- Social sciences (2018)

## STEM

- Chemistry Research (2009)
- Physics Research (2010)
- Mathematical Sciences (2011)
- Earth Sciences (2011)
- Biology, Clinical Medicine and Health Science (2011)
- Technology (2015)



## Aims of the academic field evaluations

1. Provide a critical review of the Norwegian research system from an international perspective
2. Provide recommendations on measures to encourage increased quality and efficiency of research
3. Recent developments (from 2015)
  - interplay of research and teaching
  - societal impact



## Impact definition (REF 2014)

any effect on, change or benefit to the:

economy, society, culture, public policy or services, health, the environment and quality of life, beyond academia



## Change in the discourse

- What is societal impact?  
...and should it be expected from humanities research?
- Do we have examples of societal benefits created from humanities research?  
...and could the REF impact case template be used to document them?









# 404 impact cases

- Assessed by 13 disciplinary panels
- Categorized according to
  - organisation of research
  - dissemination channel
  - beneficiaries
  - reach and effect
- Mapped onto H2020 societal challenges ...and the Norwegian equivalent

Impact case study

Institution: University of Oslo, Faculty of Art and Ideas / Dept. of Linguistics  
Panel number: 2 / 4  
Case number or short name: RETPUB

Institution: Faculty of Humanities, University of Oslo  
Panel number: 4  
Case number or short name: [redacted]

Name of impact case: Revival of Boruca language
Summary of the impact (maximum 100 words) The study of Boruca language brought about many restorations etc. These publications have brought the language back to life, and have inspired a new generation of speakers.
Description of the research (include names of key researchers) The interest for reviving Boruca language has been forgotten. He had nearly disappeared. Since 1995 I have been working to bring it back.

Impact case study

Institution: University of Oslo, Faculty of Arts and Social Sciences / The Center for Multilingual Studies  
Panel number: 2  
Case number or short name: Assessment of the impact of the Tibet Network

Name of impact case: The Tibet Network and research on Tibetan religion
Summary of the impact (maximum 100 words) The Network for University Co-operation Tibet-facilitated collaboration between institutions in the Region (TAR) and Norway. This research and scholarship has broadened academic collaboration between TAR and Norway. The Network receives funding from the University of Oslo and the Norwegian Government.
Description of the research (include names of key researchers) The research includes several reports and publications carried out by Dagrun Skjelbred, Bente Aamotsbakken, Eva M. Geir Winje, Anne-Beate M. ...

Impact case study

Institution: Faculty of Humanities, University of Oslo  
Panel number: 3  
Case number or short name (max 10 characters): [redacted]

Name of impact case: Critical understanding of gender in literature
Summary of the impact (maximum 100 words) The meaning of concepts such as «man», «woman», «mother» and «father» is not only expressed but also researched, which has focused on negotiations of gender in literature, but also how gender informs our activities in the public sphere.
Description of the research (include names of key researchers) The research project in 2016. Its focus for material research largely oversteered traditional boundaries of research.

Impact case study

Institution: IMK/HF  
Panel number: 8  
Case number or short name (max 10 characters): Security and the media

Name of impact case: The Hadron Particle and processing. It is research since 2010. Imperative focus on open source data language (sound, a community with the German company thereby creating a bridge between the two worlds.
Summary of the impact (maximum 100 words) The Hadron Particle and processing. It is research since 2010. Imperative focus on open source data language (sound, a community with the German company thereby creating a bridge between the two worlds.
Description of the research (include names of key researchers) The research project in 2016. Its focus for material research largely oversteered traditional boundaries of research.

Panel number: 1 (Aesthetic Studies)  
Case number or short name (max 10 characters): CHILMUS

Name of impact case: Children's music as children's culture
Summary of the impact (maximum 100 words) The research conducted by Ingeborg Lunde Vestad on children's culture has shown that children's music is not only a cultural phenomenon, but also a social one. It has implications for shaping the views of individual level teachers and service staff and play might mean.
Description of the research (include names of key researchers) The research project in 2016. Its focus for material research largely oversteered traditional boundaries of research.

Impact case study

Institution: Høgskolen i Buskerud og Vestfold (BUC) / The Norwegian Directorate for Education and Training  
Panel number: 2  
Case number or short name (max 10 characters): QALanguage

Name of impact case: The quality of language in educational media
Summary of the impact (maximum 100 words) Research on the quality of language used in textbooks at USN and publishers and textbook authors think about language in textbooks change in the way that primary and secondary level teachers choose and The Norwegian Directorate for Education and Training regard the cooperation is to make a Centre for Textbooks and Educational Media.
Description of the research (include names of key researchers) The research includes several reports and publications carried out by Geir Winje, Anne-Beate M. ...



# Relevance of the impact cases to Horizon 2020

## Humanities

	Health	Agriculture and maritime	Energy	Transportation	Climate	Europe in a changing world	Secure societies	Sum
Panel 1	2					9		11
Panel 2	4		1			6		11
Panel 3						6		6
Panel 4	1	1			3	13	3	21
Panel 5		1				20	3	24
Panel 6	4				2	6	1	13
Panel 7	2					9		11
Panel 8					1	3	1	5
<b>Sum</b>	<b>13</b>	<b>2</b>	<b>1</b>		<b>6</b>	<b>72</b>	<b>8</b>	<b>102</b>



# Relevance of the impact cases to Horizon 2020

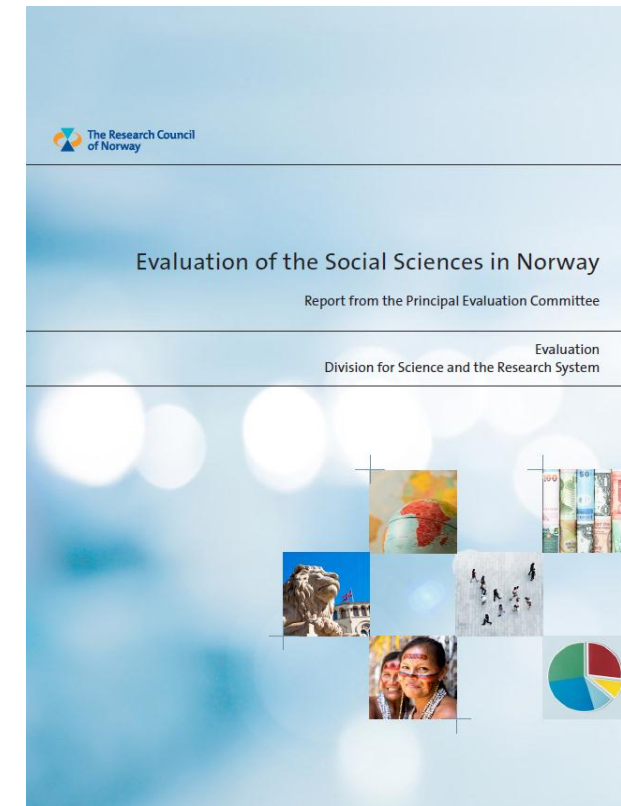
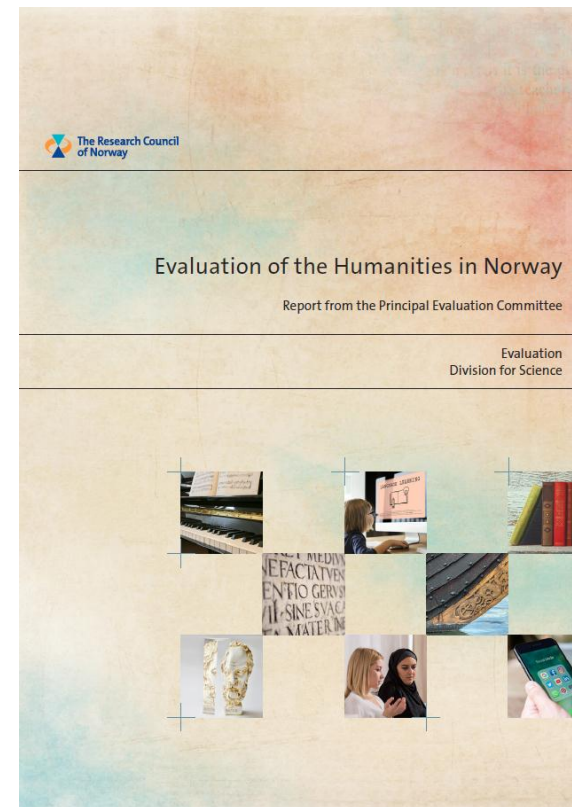
## Social Sciences

	Health	Agriculture and maritime	Energy	Transportation	Climate	Europe in a changing world	Secure societies	Sum
Panel 1	0	2	2	0	7	0	1	12
Panel 2	1	0	3	2	3	4	0	13
Panel 3	1	0	3	0	3	9	8	24
Panel 4	16	1	0	0	2	10	12	41
Panel 5	4	1	0	0	2	2	1	10
Panel 6	1	3	2	2	1	0	5	14
<b>Sum</b>	<b>23</b>	<b>7</b>	<b>10</b>	<b>4</b>	<b>18</b>	<b>25</b>	<b>27</b>	<b>114</b>



# The evaluation process

- Evaluation of the impact cases was carried out by international peers
- The evaluation panels found several good and varied examples of societal impact among the submitted cases





## Security and the media

- Evaluation of the Humanities
- Panel 8 Media Studies
- University of Oslo - Faculty of Humanities
- **Claim:** Prof. Christina Archetti's research has played a significant role in the growing awareness on the role of media developing (and limiting) terrorism and extremism.





## National park = research laboratory

- Evaluation of the Humanities
- Panel 5 Archeology & History
- University Museum of Bergen
  
- **Claim:** Interdisciplinary research on Hardanger has had impact on identity and management in Hardanger and beyond

*Hardangervidda*



**HUMANIORA:** Kunnskapsminister Torbjørn Røe Isaksen (H) vil at humaniora skal stå på egne bein. Foto: Nesvold, Jon Olav/ NTB scanpix

# Humaniora lar oss besvare de store spørsmålene

## Et forsvar for humaniora

Det blir bare viktigere og viktigere

Fag som filosofi, språkvitenskap, antropologi og kjønnsforskning blir stadig erklært for uvitenskapelige av dem som bruker matematikk i forskning

Det er på tide kritikerne får svar.

## Humaniora, skal vi danse?



**Meld. St. 25**  
(2016–2017)  
Melding til Stortinget

Humaniora i Norge



**VOKTES OM:** Dersom vi definerer «nytte» for snevert, taper de humanistiske fagene. Foto: Scanpix / Shutterstock

Humaniora under press:

## Humanistiske fag er ikke nyttige på samme måte som teknologiske fag. Det betyr ikke at de er unyttige

Plutselig er det bruk for humanistenes kompetanse

## Humanist, tør å vise deg frem!

Hvilken privat bedrift trenger en filosof? Eller historiker? Humanistene må

tørre å vise seg frem hvis de skal være relevante.

## Humaniora fremmer grunnleggende demokratiske verdier | Ledere ved to norske universiteter

Økonomi og innovasjon kan ikke alene løse Europas utfordringer





# The Humanities...

...promote democratic values

...may help us answer the big questions

...are useful but in a different way than technological research

...should dare come forward!





## Challenges

- **Implementation** of the method
  - Uneven understanding of the REF definition of impact among the participating institutions
  - Lack of documentation
- **Limitations** of the method



## The way forward

- Develop an **impact infrastructure** at the institutions
- Further **development of the methods** for assessing and evaluating societal impact
  - combining different methods
  - focusing on the process of interaction between researchers and users
  - focusing on the objectives of the research performing institutions



What's «impact» really?

## Hva er egentlig «impact»? Ny serie i HF-aktuelt gir svar

HF-forskerne hjelper oss til å forstå hva impact er ved å levere forskning som forandrer. Nå presenterer vi et utvalg av disse i form av en serie artikler.

I denne serien viser vi fram HF-forskning som forandrer.

Alle instituttene er representert, og i månedene som kommer vil det i hver utgave av HF-aktuelt komme en presentasjon av en ny HF-forsker som gjennom sin forskning gir oss et godt – og noen ganger overraskende - eksempel på *impact*.

God lesning!

[Impact: Hvordan selge musikk i strømmingens tidsalder?](#) (22. mars 2017)

[Impact: Oddrun Grønvik og Christian-Emil Ore om digital målreising i Afrika](#) (8. mars 2017)

[Impact: Arne Johan Vetlesen og Breiviks tilregnelighet](#) (22. februar 2017)

[Impact: Hilde Henriksen Waage og striden om norsk Midtøstenpolitikk](#) (14. desember 2016)

**Impact:**  
Transformative  
Research

**Impact:  
Forskning  
som  
forandrer**

hf

Aktuelt

Interne nyheter for  
ansatte på HF

2016

■ Høst 2016

■ Vår 2016

# The co-produced pathway to impact

Phipps, D. J. et al. (2016)

*Community Engagement and Scholarship*, 9(1): 31-40  
<http://bit.ly/2fCqTcw>

