

Evidence-based Practice & Policies for Impact on Mental Health of Children and Adolescents

Raphaela Kaisler¹, Jean Paul^{1, 2}

1. Ludwig Boltzmann Gesellschaft
2. Medical University of Innsbruck

raphaela.kaisler@lbg.ac.at
jean.paul@lbg.ac.at

SSH Impact Conference, Vienna 28.11.18



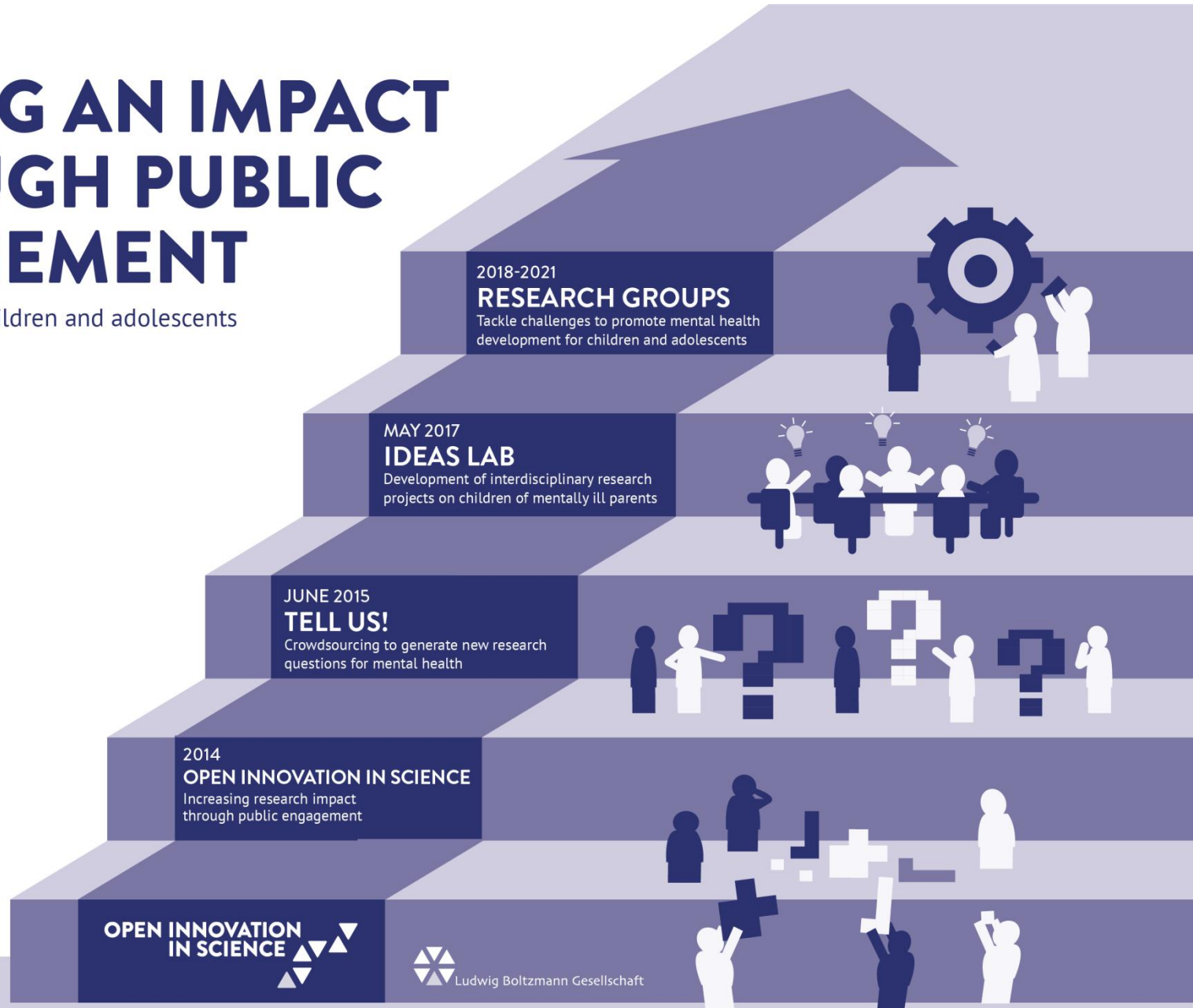
VILLAGE



MEDIZINISCHE
UNIVERSITÄT
INNSBRUCK

MAKING AN IMPACT THROUGH PUBLIC ENGAGEMENT

on mental health of children and adolescents



**OPEN INNOVATION
IN SCIENCE**

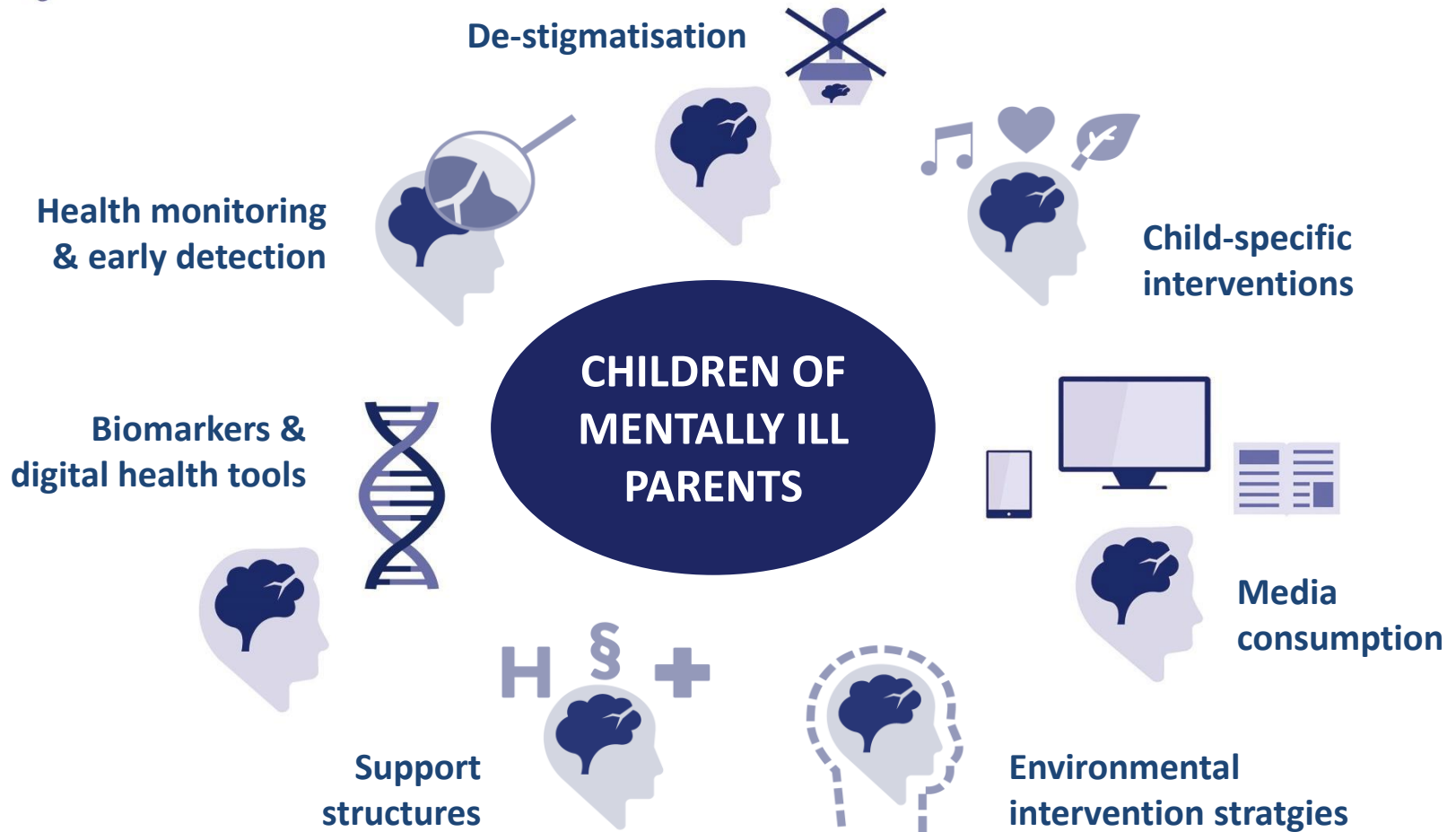


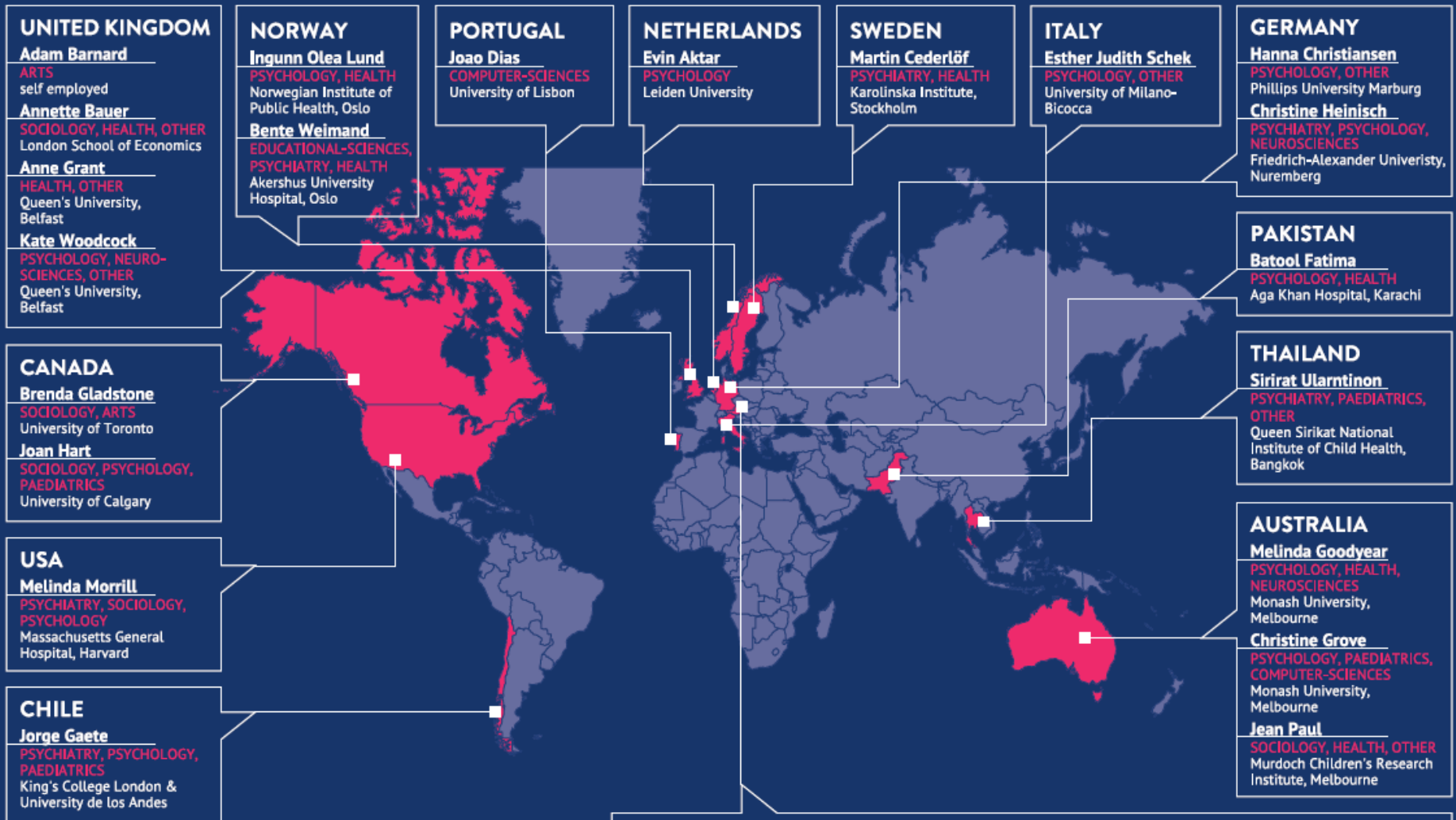
Ludwig Boltzmann Gesellschaft



TELL US!

Community defined research challenges





IDEAS LAB PARTICIPANTS

24-28 May 2017



COUNTRY	Name	DISCIPLINES	Current host Institution
AUSTRIA	Vaidilute Asisi	PSYCHOLOGY, HEALTH, OTHER	Child Psychology Centre, Mödling
	Laura Brandt	EDUCATIONAL-SCIENCES, PSYCHOLOGY, HEALTH	University of Vienna
	Silvia Exenberger-Vanham	PSYCHOLOGY, OTHER	Medical University Innsbruck
	Monika Geretsegger	PSYCHIATRY, PSYCHOLOGY, OTHER	Landeskränikum Hollabrunn
	Marija Mitic	PSYCHIATRY, HEALTH, OTHER	Medical Univeristy of Vienna
	Conor Patrick Murphy	PSYCHIATRY, HEALTH, NEUROSCIENCES	University of Innsbruck
	Beate Schrank	PSYCHIATRY, SOCIOLOGY, PSYCHOLOGY	University Clinic Tulln, Karl Landsteiner University
	Ingrid Zechmeister-Koss	HEALTH	European Centre for Social Welfare Policy & Research, Vienna



IDEAS LAB

Agenda



Day
1

Day
2

Day
3

Day
4

Day
5

EXPERTISE

Who is who?

Knowledge in the room,
scope of the event,
guest speakers &
actor's presentation

EXPLORE CHALLENGES

Generation of ideas
and inspiration,
experts by
experience (patient
perspective)

PROJECT IDEAS

Explore three
potential project
options &
preliminary form
teams

FORMING TEAMS

Further
development on
project ideas and
reshuffle teams

RESEARCH PROJECTS

Finishing
working on
projects &
deliver final
presentations

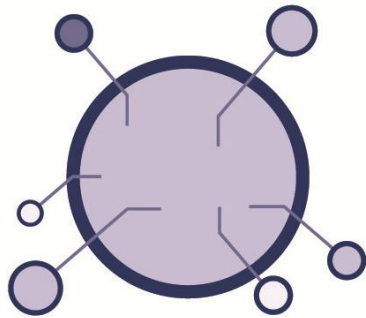




IDEAS LAB

Final assessment

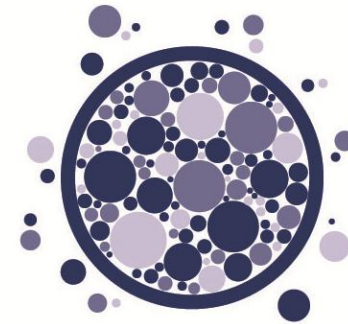
5 Research Groups were **assessed based on five criteria**,
2 Research Groups invited for further concept development:



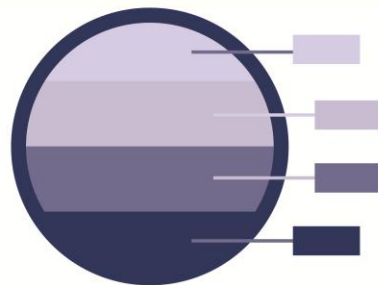
NOVELTY



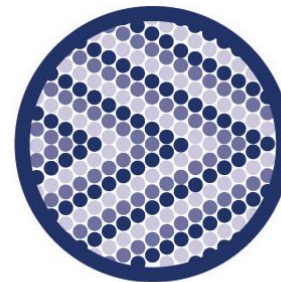
INTERDISCIPLINARITY



ENGAGEMENT



FEASIBILITY



IMPACT





RESEARCH GROUPS

Management structure





RESEARCH GROUP VILLAGE

How to raise the Village to raise the child

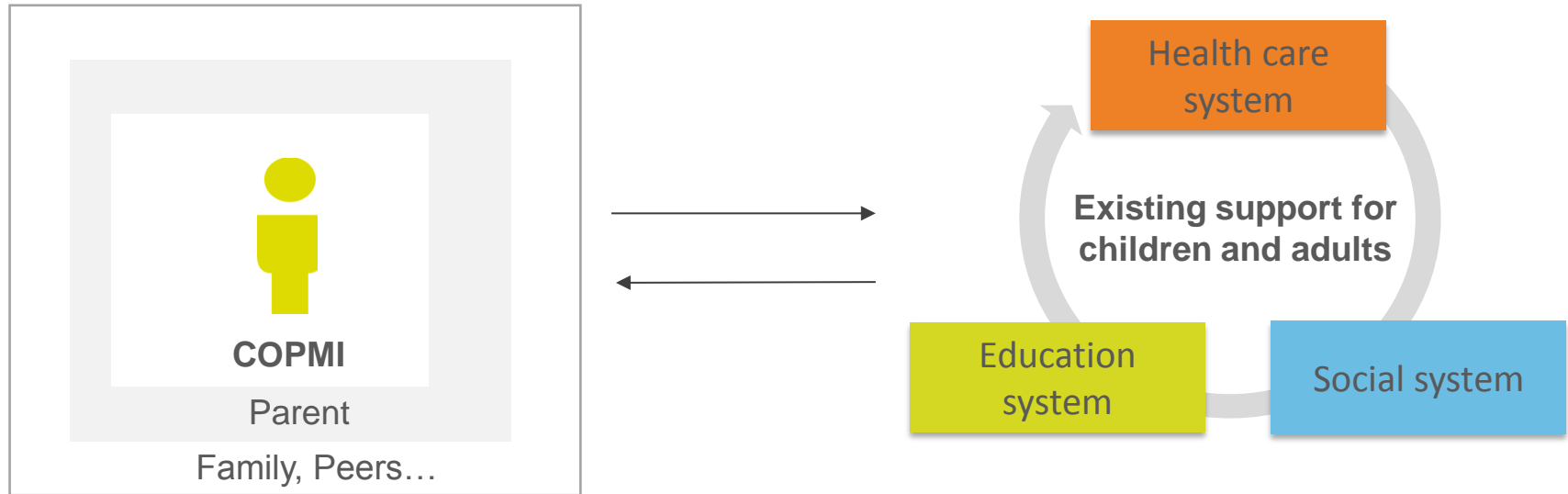
Why children of parents with a mental illness (COPMI)?

- Approximately **1 in 4 children** currently lives with a parent with mental illness worldwide
- Families likely to have **less resources** to support these children and their development
- **Increased risk** of developing a mental illness themselves and having emotional difficulties
- **Less likely** to be identified until **accessing treatment**





Vision



Improve **identification** and **child-focused support** of vulnerable children across a region in Austria





Co-creation with stakeholders

- 4 year (2018-2021), 3 mill euro budget
- Children at the centre with their voices and needs being specifically addressed
- Co-development, implementation and evaluation of two practice approaches to improve
 - (1) identification of COPMI, and**
 - (2) strengthen formal and informal child-focused support**
- Based upon developing an understanding of: what works, for whom, under which conditions, and why



Local stakeholders



Gesundheit Österreich
GmbH ● ● ●

pro mente tirol





- **Desktop research:** map local services in Tyrol
- **Interviews with healthcare professionals** in adult mental health, n = 30
 - *Professionals views of situation for COMPI in Tyrol*
 - *Changing practice towards family focused adult mental health*
- **Mapping report:**
 - 2017: 108,000 children < 15 years living in families in Tyrol
 - 21,600 (20%) – 27,000 (25%) COPMI in Tyrol
 - coordination of services based on children's should be enhance
 - Robust epidemiological data lacking
 - 3% of population in Tyrol may be severely ill
 - 15% of the TGKK-insured persons receive mental health benefits
 - 85% of patients received medication, 63% without any further benefits

Codevelopment with stakeholders



- Iteratively **co-develop 2 practice approaches**, training materials, & outcome measures, **with local stakeholders**
- series of 6 facilitated workshops informed by scoping
- Duration: Nov 2018 – April 2019
- Mixed methods used





VILLAGE

Impact plan

- **Service users:**
 - provide access to strengthened social support network
> emotional, practical and social needs
 - likely > sustainable changes in child's life, and positive effects on long-term outcomes into adulthood, such as school performance, employment, and mental health
- **Policy, practice, and research:**
 - test an innovative whole-system approach in an Austrian region
 - develop a training approach, tools and implementation support package > allow scaling-up the approach at a national level
 - assist practice internationally that seeks to provide holistic care to COPMI
 - evaluation can inform resource impact analysis > an estimate of the costs to government (and society) if approach rolled out more widely



MEDIZINISCHE
UNIVERSITÄT
INNSBRUCK



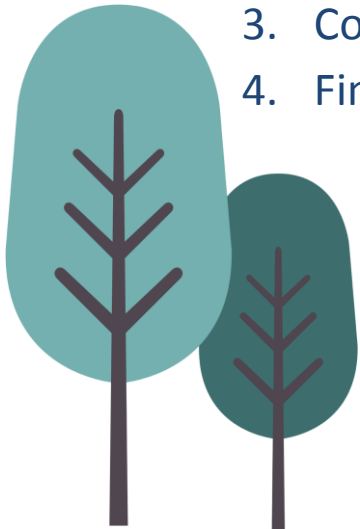
Ludwig Boltzmann Gesellschaft



Awareness campaign

Workshops “Mental health” in Tyrolian schools students age 10-18 years

1. Inform about mental health
2. Share personal experience
3. Codevelop vision of village with students
4. Find “invisible” children



Multidisciplinary prevention team

- Contacts to schools and parents
- Codevelop workshop format with





VILLAGE

Acknowledgements

www.village.lbg.ac.at
office@village.lbg.ac.at

- **Reference Group**

- Lesley Stirling, School of Languages and Linguistics, The University of Melbourne, Australia
- Geoff Wong, Nuffield Department of Primary Care Health Sciences, University of Oxford, UK

- **Competence group**

- 8 experts by experience

- **Advisory Board**

- Tytti Solantaus, National Institute for Health and Welfare, Finnish Association for Mental Health, Helsinki, Finland
- Sara-Evans Lacko, London School of Economic and Political Science, UK
- Heidi Hamilton, Georgetown University, USA
- Erin Turbitt, National Human Genome Research Institute (NIH), USA
- Clemens Blümel, German Center for Higher Education and Science Studies, Humboldt-University Berlin, Germany
- Christian Kloss, Social Scientist/Political Scientist, Germany
- Laura Pettenuzzo, Psychologist, Monash University, Australia

Innovation in Science Center, Ludwig Boltzmann Gesellschaft

- Alex Hofer, Professor of Psychiatry, Medical University of Innsbruck

- **In-kind support, Medical University of Innsbruck**

- Alex Hofer, Director Psychiatry I
- Barbara Sperner-Unterweger, Director Psychiatry II
- Kathrin Sevecke, Director Child and Adolescent Psychiatry
- Silvia Exenberger-Vanham, Clinical psychologist and academic, Department of Medical Psychology
- Bernd Mayr, Research Assistant, Department of Psychiatry I

- **Cooperation partners**

- Österreichische Liga für Kinder- und Jugendgesundheit
- HPE Tirol, Hilfe für Angehörige psychischerkranker
- Innsbrucker Soziale Dienste
- Innocence in Danger
- SOS Kinderdorf
- Gesundheit Österreich GmbH
- Pro Mente Tirol
- Elternbildung Tirol



Ludwig Boltzmann Gesellschaft



MEDIZINISCHE
UNIVERSITÄT
INNSBRUCK

- Lucia Malfent, Operational Director, Open